



Clark County Public Campgrounds with direct ATV trail access

Clark County offers many camping opportunities throughout the county. The following campgrounds have direct access to the ATV trail system and are marked on the map. For additional camping and outdoor recreation opportunities please contact Clark County Forestry and Parks at 715-743-5140 or on the web at clarkcountymi.gov.

Wild Rock Park & Campground: 35 campsites, RV dump station, campsite electric and water service, parking area with loading ramp, picnic-play area and shelter facilities.

Snyder Park & Campground: Located on 28-acre Snyder Lake, there are 32 campsites, electric, RV dump station, vault toilets, shower houses, flush toilets, picnic, beach and play areas, boat launch, shelters and fishing access.

Wildcat Mound Park: Remote camping, vault toilet, drinking water and a picnic area are available.

Russell Memorial Park & Campground: Clark County's premier park and campground located on Lake Arbutus with 230 campsites, campsite electric and water service, three shower houses, flush toilets, laundry facilities, convenience store, RV full hookup and dump station, picnic areas and beach. Contact the park office at 715-333-7948 (open May through September).

Rock Dam Park Campground: 150 campsites, flush toilets, convenience store, campsite electric and water service, RV full hookup and dump station, two shower houses, picnic, beach and play areas. Rock Dam Lake offers many water-based recreational activities. Contact the park office at 715-267-6845 (open May through September).

Clark County ATV trail access and parking

There are many convenient locations where you can park and access the trail.

- Oak Ridge Parking Lot, Hwy. M north of Hwy. GG
- Camp Globe Road Parking Lot, one mile west of Rock Dam Park
- Wild Rock Park, Hwy. M and Hwy. I
- Hwy. 10 Parking Lot, on Hwy. 10 one mile northwest of Hwy. B and Hwy. 10
- Wildcat Park, Hwy. B five miles east of Humbird
- Hatfield Pines Parking Lots, two lots located off Bush Road west of Hwy. J just northwest of Hatfield

Jackson County ATV trail access and parking

There are many convenient locations where you can park and access the trail.

- Off Hwy. 12, two miles west of Millston
- Hwy. O and North Settlement Road, one mile east of Millston
- Ott Trail parking lot on Airport Road east of Black River Falls
- Hwy. 54, 10 miles east of Black River Falls, just east of Wildcat-Spangler Road
- West Clay School Road near East Arbutus Campground, southeast of Hatfield
- East Arbutus Campground, north of W. Clay School Road
- Crawford Hills County Park, 20 miles west of Black River Falls on Hwy. 54

Jackson County Public Campgrounds with direct ATV trail access

Jackson County offers many camping opportunities for the ATV enthusiast. Both East Arbutus County Park and Crawford Hills County Park have direct access to the ATV trail system. To make online reservations, visit <https://www.jacksoncountyparks.us/parks/index.phtml>. For additional camping opportunities, contact the Black River Area Chamber of Commerce at 800-404-4008, visit www.blackrivercountry.net or email at chamber@blackrivercountry.net.

East Arbutus County Campground: 174 campsites – some with water access – near the shores of Lake Arbutus near Hatfield. Firewood, ice, drinking water, showers, RV dump stations, boating, hiking, playground. Popular with water-skiers, jet-skiers, boaters and anglers. Fee or park sticker required. ATV/motorcycle trail access. Directions: Exit 116 from I-94, Hwy. 54 six miles east to Hwy. K. Turn north for eight miles to Clay School Road. Turn east for one mile to the park. 715-333-5832

Crawford Hills: 15 campsites, drinking water, hiking, playground, ATV/motorcycle trail access, fee or park sticker required. Primarily an off-road vehicle park. Offers visitors a chance to drive their motorcycles along single-track motorcycle trails through the park or have access to other county ATV trails. Located 15 miles east of Black River Falls off Hwy. 54. 715-284-8475



Off-road motorcycle regulations

In Clark County and Jackson County, only street legal motorcycles – driven by licensed operators – are allowed on the ATV trail system. All non-street motorcycles may only operate on the Clark County Knobby Ridge Motorcycle Trails or Jackson County Crawford Hills Motorcycle Trails.

In Jackson County all motorcycles using any trail system (ATV trails or motorcycle trails) must have a Jackson County Motorcycle Sticker. Stickers are available at the following locations: Best Western - SureStay, Black River Falls; Black River Motorsports, Black River Falls; Lamberts Quick Stop, Millston; Back Roads Saloon, Pray; and Jackson County Forestry & Parks Office, Black River Falls.



Please scan this QR code to purchase an Annual Motorcycle Sticker online.



Other ATV routes

Many local roads in Jackson and Clark County are open to ATV use. The map will only show those connecting routes which are integral part of the ATV/UTV trail system. Due to the dynamic nature of routes (new openings and closures) that frequently occur, it would be nearly impossible to print a map that would remain accurate for any length of time. The local town clerks keep records of route ordinances passed in their jurisdiction. These town names are shown in a light pink color on the map. Information regarding the Jackson County Town Officials can be accessed by visiting the Jackson County website at www.co.jackson.wi.us and looking under the Departments>County Clerk>County Directory tabs. The Clark County Town Officials can be accessed by visiting clarkcountymi.gov and clicking on the Government tab and selecting the Directory of Public Officials. Otherwise, use the QR codes below to access:



Jackson County



Clark County

All-terrain vehicle nonresident trail pass

You must either register your ATV in Wisconsin or purchase a valid Wisconsin ATV trail pass to legally operate in Wisconsin. All ATVs kept in Wisconsin for longer than 15 consecutive days are required to be registered in Wisconsin. Nonresidents operating their ATVs in Wisconsin for less than 15 consecutive days must purchase an ATV trail pass if not currently registered in Wisconsin. Passes are available anywhere hunting and fishing licenses are sold or through the DNR website.

- The trail pass must be permanently affixed by its own adhesive in a highly visible location on the forward half of the ATV.
- Once affixed the sticker may not be removed or transferred to another ATV.

Who may operate an ATV?

Please scan this QR code to get the latest regulations regarding ATV operation.



Winter ATV operation

All Jackson County ATV trails are open for use from December 15th – March 15th. Please be sure to check trail status before riding. UTVS are not permitted during the winter season.

Due to unforeseen weather events, Jackson County trails are subject to periodic seasonal closures. We do our best to evaluate, repair and re-open the trails in a timely manner. Our website and Facebook page have the most current information on trail closures, construction re-routes and other useful information. It is always best to check riding conditions prior to arrival.



For the most current information, please visit our website at www.co.jackson.wi.us and click on the trail conditions tab. Like us on Facebook (Jackson County Parks & Trails) to receive updates on your electronic device, or call us at 715-284-8475.



You can scan this QR code for current conditions:

Jackson County enforces a 28 degree temperature restriction on the use of ATVs from December 15th through March 15th. If temps go above 28 degrees, please stay off the trail system. The official temperature used to enforce this restriction is recorded at the Black River Municipal Airport and is posted on the National Weather Service website at www.weather.gov.

You can scan this QR code for official weather information:



Restricted list

The following cannot be operated on ATV trails or routes in Clark or Jackson County:

- 6-8 wheel amphibious vehicles
- Golf carts or go carts
- Off-road motorcycles

Important ATV requirements:

- Your ATV must be equipped with a functioning muffler to prevent unusual or excessive noise. No person may operate an ATV in such a manner that noise emitted from the ATV is louder than 96 decibels.
- Your ATV must be equipped with a (USFS approved) spark arrester at all times.
- Helmets are required for anyone under the age of 18.
- Safety certificates are required for anyone born after 1/1/1988.



ATV & UTV TRAILS MAP

Join your local club - become involved! www.watva.org
CLARK & JACKSON COUNTY WISCONSIN

Welcome to the capitol of Wisconsin's ATV trails!

The ATV/motorcycle trail system extends more than 235 miles in Jackson and Clark counties, making it one of the longest and the most popular recreational destinations in the state. Experience a ride that takes you along rock hills, pristine meadows, over clear streams or through thick canopies of pine and oak forest.

There are plenty of trail access points and parking. Before or after the ride stay at one of our many hotels or campgrounds and enjoy the hospitality of our fine restaurants and taverns.

Trails are not designed for racing or advance technical riding. Please stay on the trails and be respectful of fellow riders. Trails and routes are shared with horses, mountain bikers, hikers, hunters and vehicles. We rely on our trail users to follow the rules and practice safe, family-oriented trail riding. We hope that you have a safe and enjoyable ride.

Clark County ATV Trails

ATV Trails Open May 15-October 31 December 15-March 15	ATV Trails Closed November 1-December 14 March 16-May 14
---	---

Clark County Forestry and Parks Department
 517 Court Street, Neillsville, WI 54456
 715-743-5140 • clarkcountymi.gov

Jackson County ATV Trails

ATV Trails Open May 15-October 15 December 15-March 15	ATV Trails Closed October 16-December 14 March 16-May 14
---	---

Jackson County Forestry and Parks Department
 W9790 Airport Road, Black River Falls, WI 54615
 715-284-8475 • www.co.jackson.wi.us

Clark & Jackson County ATV Trails

In Case Of Emergency - DIAL 911

JACKSON COUNTY EMERGENCY SIGNING

Blue posts with red numbers are located along the trail in the event that an emergency occurs. The top number on the post corresponds to the trail segment you are on and the bottom number is the mileage marker. If you need assistance, here is what you should do:

1. Locate a blue post and dial 911.
2. Tell the dispatcher that you are on the ATV trail and need assistance.
3. Read the top number and the bottom number to the dispatcher and follow their instructions.

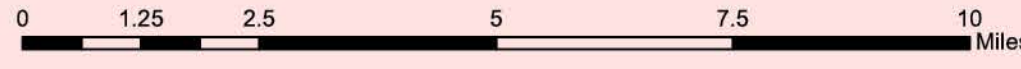
Intersection signs with red numbers are located at all trail intersections. The numbers have integrated on the map.

CLARK COUNTY EMERGENCY SIGNING

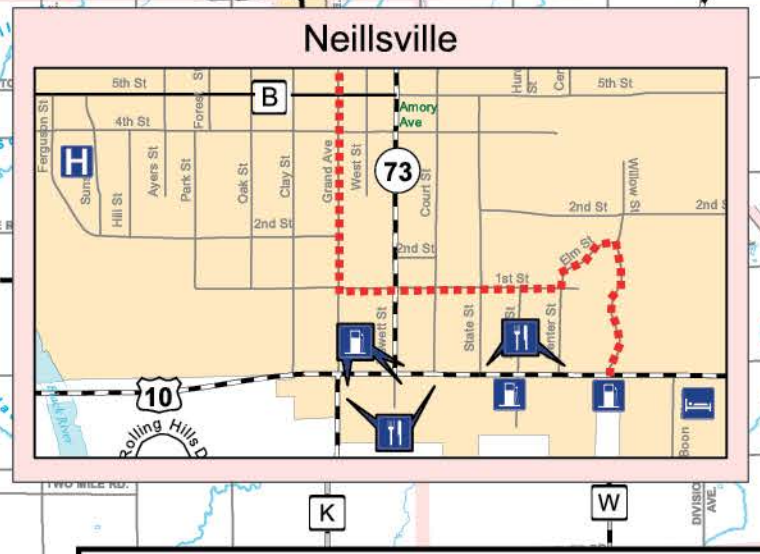
Common red & white emergency locator signs are installed throughout the trail system at intersections, not all trail intersections may have a sign. Locate a sign and dial 911.

Additionally, 9" x 9" white numbers on brown background signs are also located at intersections. A specific number and reference to Clark County have been integrated on the map.

Map Information provided by the Clark and Jackson County Land Information Offices and Forestry Depts.
Map Version 16.12 printed 2016 by Clark and Jackson County GIS Staff.
This map is intended for advisory purposes only. It is based on sources believed to be reliable, but Clark County distributes this information on an "AS IS" basis. No warranties are implied.



	ATV Trails		Jackson County Intersection		Municipalities
	Town Route Connectors		Clark County Intersection Sign		County Forest
	County Forest Route Connectors		Trail Parking		State Forest
	County Forest Rd		Camping / Water		Rivers / Streams
	Town Rd		Fuel		Unincorporated Area
	County Hwy		Food		County Boundary
	US / State Hwys		Lodging		Mileage between arrows
	Interstate Hwy		Hospital		



Interactive Map

Both Clark and Jackson Counties have developed interactive maps for mobile devices. You must have the Google maps app installed on your device, have a Google account and be signed in to download and use the map. Please scan the QR codes below or visit the counties respective websites to access these maps on your mobile device.



Clark County Trails
Google Map
clarkcountywi.gov



Jackson County Trails
Google Map
www.co.jackson.wi.us

